

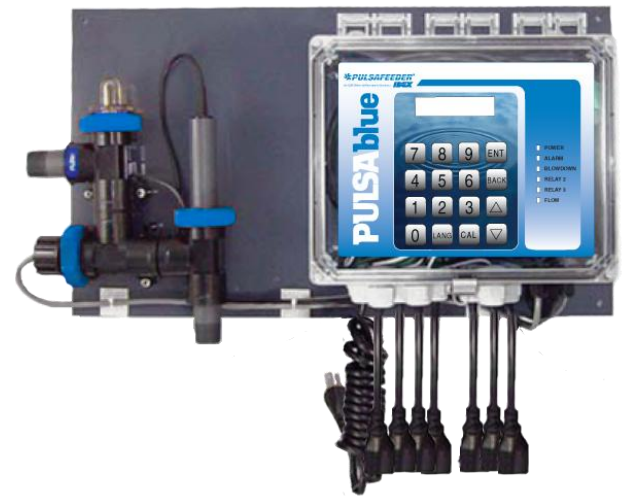
The **PULSAblue C3200 Series** controllers offer a wide variety of input and output capabilities including conductivity, pH, ORP and up to five chemical feed timers. From simple single parameter systems to multiple parameter control, PULSAblue has you covered.

Features

- Simple one point calibrations.
- Ball valve delay feature allows accurate control of motorized ball valves.
- The standard prewired configuration can be easily changed to conduit in the field.
- LED indicators for power, alarm and relay status.
- Selectable relay options:
 - Feed by setpoint, direct or reverse
 - Water meter actuated feed. Meter 1, Meter 2 or the sum of both.
 - Feed after blowdown by percent of bleed time
 - Feed by percentage of time
 - Calendar timer
 - General alarm contact
- Power selector switch for 115 or 230 VAC operation.

Operating Benefits

- Intuitive and user friendly menu interface makes programming easy.
- Standard 4-20mA output.
- Application flexibility.



Controls

Conductivity Control		pH	ORP	Conductivity & pH		Conductivity & ORP		Conductivity, pH & ORP
C3205	C3210	C3212	C3213	C3222	C3223			
C3310	C3312	C3313	C3322	C3323				
C3410			C3422	C3423	C3435			

Aftermarket

- Solenoid Valves
- Paddle Wheel Meter
- Calibration Solutions



PULSAblue™ C3200 Series

Specifications and Model Selection

Model	Conductivity Control	pH Control	ORP Control	Chemical Pump Timers	Water Meter Input	4-20mA Output	4-20mA Inputs
C3205	√			2	1	1	
C3210	√			3	2	1	1*
C3212		√		3	2	1	1*
C3213			√	3	2	1	1*
C3222	√	√		5	2	2	1*
C3223	√		√	5	2	2	1*

* Remote conductivity/pH/ORP sensor input control only.

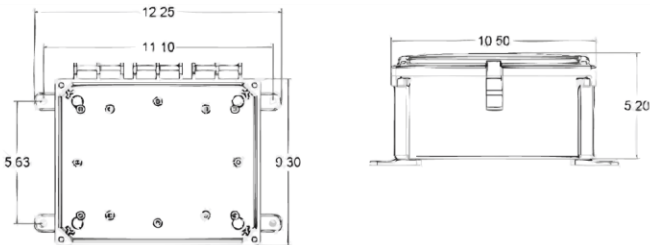
Engineering Data 3200 Series

Conductivity Range	50 - 10,000 µS
Conductivity Sensor	2 electrode, 20' cable length max.
Conductivity Resolution	± 10 µS (conductivity < 5000 µS) ±100 µS (conductivity > 5000 µS)
pH Range	0 - 14 pH
ORP Range	± 1,000 mV
pH & ORP Sensors	15' cable length max.
Resolution	± 0.10 pH or 1 mV
Temperature Comp.	Automatic
Accuracy & Repeatability	± 1.0%
Auto/Manual Outputs	Menu selectable
Display	Illuminated 128 x 64 pixel LCD
Drum Switch inputs	2 digital contact inputs
Water Meter Inputs	(2) Contact head, paddle wheel or turbine
Output Signal	(2) 4-20 mA, isolated or non-isolated optionally powered output for conductivity and pH/ORP
Output Relays 3210 to 3213	(4) 3 selectable use, 1 control
Out Relays 3222 and 3223	(7) 5 selectable use, 2 control
Relay Ratings	3A each, 10A total
Power	120/240 VAC 50/60 Hz
Ambient Temperature	32° - 120°F (0 - 49°C)
Agency Listings	ANSI UL/CSA
Enclosure	NEMA 4X

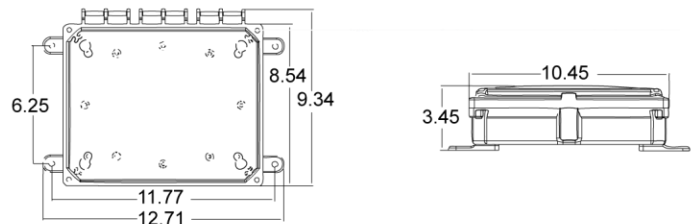
Sensors / Plumbing	Cooling Tower
Max Pressure @ 100°F (38°C)	140 psi (9.65 bar)
Max Temp	140°F (60°C)
Min flow	1 gpm (3.785 lph)

Dimensions

3222, 3223 Series



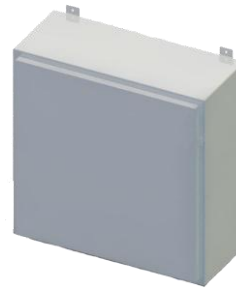
3205, 3210, 3212, 3213 Series



Engineering Data Sensor

Conductivity Range	0 - 10,000 µS
Conductivity Sensor	2 electrode, 20' cable length max.
Conductivity Resolution	± 10 µS
Temperature Comp.	500 ohm NTC
Auto/Manual Outputs	Menu selectable
Display	16 x 2 Character
Water Meter Inputs	(1) Contact head, paddle wheel or turbine
Output Signal	(1) 4-20 mA, isolated or non-isolated optionally powered output
Output Relays	2 selectable use, 1 blowdown
Relay Ratings	3A each, 10A total
Power	120/240 VAC 50/60 Hz
Ambient Temperature	32° - 120°F (0 - 49°C)
Water Temperature	32° - 140°F (0 - 60°C)
Pressure	140 psi @ 100°F
Agency Listings	ANSI UL/CSA
Enclosure	NEMA 4X

Custom Engineered Designs



Fully Enclosed Systems

The controller and metering pumps are enclosed in a steel enclosure with a hinged door for protection and security. The Standard system includes a sample stream plumbing assembly, 3/4" PVC inlet valve, 3/4" PVC outlet valve, sample valve, clear bowl strainer and a flow switch. Optional features include corrosion coupon racks, flow meter, and prewired electrical connections.

pulsafeeder.com



27101 Airport Rd
Punta Gorda, FL 33982
Phone: ++1(941) 575-3800
Fax: ++1(941) 575-4085

An ISO 9001 and ISO 14001 Certified Company



CTS007 C12